



**E & A CONSULTING GROUP, INC.**

*Engineering Answers*

10909 Mill Valley Rd, Ste 100 | Omaha, NE 68154  
402.895.4700  
eacg.com

Dear Homeowner,

The SID has contracted concrete work to be done on the streets in your SID. A contractor will be on site to do work which includes removing the existing concrete that is damaged and replacing it with new pavement.

Throughout the course of this project, there could be some minimal damage done to yards and or sprinkler systems. The contractor that is on site will be responsible for replacing any damaged sprinkler lines and/or heads. They will also be responsible for any yard damage. Once the new seed and mat and/or sod is installed, it will be the responsibility of the homeowner at each lot to water the new seed and mat and/or sod until it has re-established itself.

Before starting the work on site, each contractor must put in a call and have all the utilities in the area located. You might notice some areas in your yard that have been flagged and/or spray painted. This does not indicate the area in which they will be working. It is just to give them an idea of what kind of utilities are in the area that could possibly be hit while the contractor is on site working.

All work that is completed in public Right-of-Way and follow City of Omaha and Sarpy County specifications.

The work in your SID should not take longer than 30 days to complete. Please let me know if you have any questions or concerns on this at all.

Thank You,

A handwritten signature in blue ink, appearing to read 'TG', is written over a light blue horizontal line.

**Travis Gifford**

Construction Admin Tech

**Engineering Answers**...by transforming concepts into reality

E & A Consulting Group, Inc.

10909 Mill Valley Road, Suite 100 • Omaha, NE 68154

402.895.4700 (o) • 402.702.1767 (m)

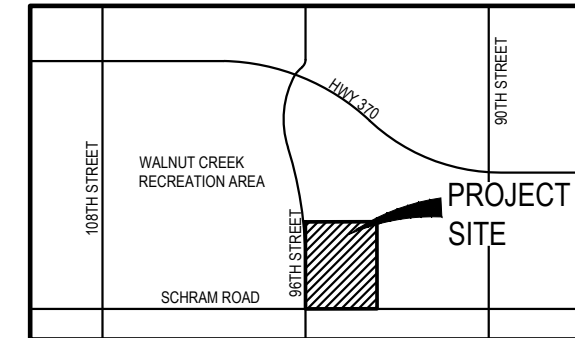
[tgifford@eacg.com](mailto:tgifford@eacg.com)



# EDGEWATER ON THE PARK

## 2024 STREET RECONSTRUCTION

SID NO. 244  
SARPY COUNTY, NEBRASKA



VICINITY MAP



### APPROXIMATE BID QUANTITIES

ITEM	DESCRIPTION	QUANTITY	UNIT
1	CONCRETE PAVEMENT REPAIR, LARGE AREA	458	SY
2	CONCRETE PAVEMENT REPAIR, SMALL AREA	234	SY
3	FULL DEPTH SAW CUT EXISTING PAVEMENT	820	LF
4	REMOVE AND REPLACE FAULTY SUBGRADE	25	TN

### NOTE TO BIDDERS

- All project procedures, materials, bonds and reserves shall conform to the City of Omaha's Standard Specifications for Public Works Construction, 2020 Edition ("Standard Specifications"). It is the responsibility of the CONTRACTOR to be familiar with the contents of the Standard Specifications. The Standard Specifications can be found at: [https://publicworks.cityofomaha.org/images/2020\\_Standard\\_Specifications\\_April\\_20\\_2020.pdf](https://publicworks.cityofomaha.org/images/2020_Standard_Specifications_April_20_2020.pdf)
- References to "Standard Plates" refers to the City of Omaha's 2020 Standard Plate list. These Standard Plates can be found at: <https://publicworks.cityofomaha.org/2020-standard-plate-list>

The CONTRACTOR is referred to the following Standard Plates for use on this project:

PLATE NO.	DESCRIPTION	REVISION DATE
1002-02-1, 3, & 4	Pavement Repair	02/11/2019

### INDEX OF SHEETS

SHEET NO.	DESCRIPTION
1	COVER
2	PLAN



### APPLICANT

SID 244  
Benedict Ricceri, Chairman  
11440 West Center Rd, Ste C  
Omaha, NE 68144  
P: 402.334.0700  
F: 402.334.0815  
mjohnson@fjjblaw.com

### DESIGNER

E & A Consulting Group, Inc  
Teresa Wooten, P.E.  
10909 Mill Valley Road, Suite 100  
Omaha, NE 68154  
P: 402.895.4700  
F: 402.895.3599  
twooten@eacg.com

### INSPECTOR

E & A Consulting Group, Inc  
Randall L. Pierce, P.E.  
10909 Mill Valley Road, Suite 100  
Omaha, NE 68154  
P: 402.895.4700  
F: 402.895.3599  
rpierce@eacg.com

### CONTRACTOR

**E & A CONSULTING GROUP, INC.**  
Engineering • Planning • Environmental & Field Services

**E & A CONSULTING GROUP, INC.**  
Engineering Answers

**EDGEWATER ON THE PARK**  
2024 STREET  
RECONSTRUCTION  
SID 244  
SARPY COUNTY, NEBRASKA

**COVER**

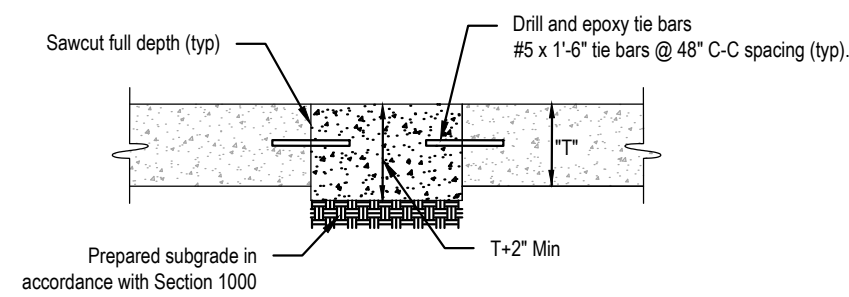
Revisions	Date	Description
1	08/26/2024	TAM

Proj No: P2002189103  
 Date: 08/26/2024  
 Designed By: TAM  
 Drawn By: C.L.  
 Scale: 1" = 200'  
 Sheet: 1 of 2

8/26/2024 5:21 PM  
K:\Projects\2002189103\Engineering\CAD Files\Paing\Edgewater on the Park 2024 Street Reconstruction-000.dwg  
Chase J. Luther



2024 STREET RECONSTRUCTION									
AREA NO.	NO. POURS	SAW CUT L.F.	CURB L.F.	WIDTH	X	LENGTH	LARGE AREA EST S.Y.	SMALL AREA EST S.Y.	NOTES
1	1	55	45	12.5	x	45.0	62.5		
2	2	65	45	25.0	x	15.0	41.7		
3	2	65	45	25.0	x	15.0	41.7		
4	2	80	60	12.5	x	30.0	41.7		
5	1	85		12.5	x	30.0		41.7	
6	1	70	15	12.5	x	30.0		41.7	
7	2	70	45	12.5	x	45.0	62.5		
8	1	40	15	12.5	x	15.0		20.8	
9	2	80	30	25.0	x	30.0	83.3		
10	1	20	10	4.0	x	10.0		4.4	
11	2	55	30	12.5	x	30.0		41.7	
12	1	55	30	12.5	x	30.0		41.7	
13	1	55	30	12.5	x	30.0		41.7	



**SMALL AREA CONCRETE PAVEMENT REPAIR DETAIL**  
 NOT TO SCALE



**E & A CONSULTING GROUP, INC.**  
 Engineering • Planning • Environmental & Field Services  
 10889 Mill Valley Road, Suite 100 • Omaha, NE 68154  
 Phone: 402.265.4700 • Fax: 402.965.3599  
 www.eandagroup.com  
 State of NE Certificate of Authorization #CA0008

**E & A CONSULTING GROUP, INC.**  
 Engineering Answers

**EDGEWATER ON THE PARK  
 2024 STREET  
 RECONSTRUCTION**  
 SID 244  
 SAPPY COUNTY, NEBRASKA

**PLAN**

Revisions	Date	Description
1	08/26/2024	

Proj No: P2024-189-003  
 Date: 08/26/2024  
 Designed By: TMM  
 Drawn By: C.L.  
 Scale: 1" = 20'  
 Sheet: 2 of 2